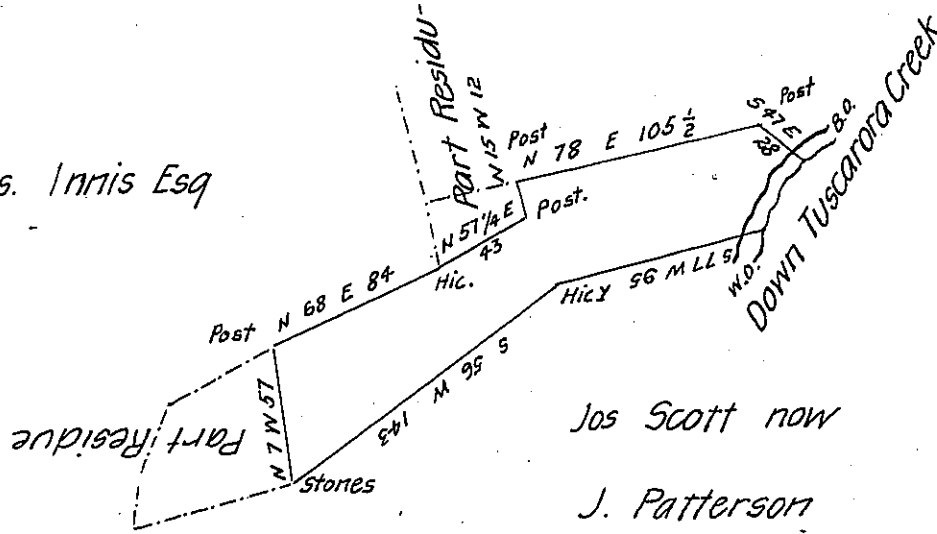


Up Tuscarora Creek  
from B.O. to W.O.  
S 61. W 12  
S 30. W 12 2/5  
South 7 1/5

J. McDonald

Jas. Innis Esq



Jos Scott now

J. Patterson

Fifty eight acres and 114 perches of land with 6 pr Cent it  
 being part of a tract of land situate in Milford township Mifflin  
 County surveyed 19<sup>th</sup> 20<sup>th</sup> June 1816 in pursuance of a Warrant to  
 Theophilus McDonald dated 14<sup>th</sup> Feb'y 1794 and said to contain 81 acres  
 & 25 perches with 6 p<sup>c</sup> Cent surveyed the above part 11<sup>th</sup> April 1821

Jno. H. Stewart D. S.

Samuel Cochran Esq<sup>r</sup>

S. G. of Pennsylvania

IN TESTIMONY that the above is a copy of the original remaining on file in  
 the Department of Internal Affairs of Pennsylvania, made  
 conformably to an Act of Assembly approved the 16th day of  
 February, 1833, I have hereunto set my Hand and caused  
 the Seal of said Department to be affixed at Harrisburg,  
 this twenty seventh day of March 1906

*Geo. D. Brown*  
 Secretary of Internal Affairs.